

Product Datasheet
LEARN

ThinkHR recognizes the significant risks that center around people within an organization and offering a learning management system that delivers powerful training content is a key element for providing an end-to-end people risk management solution.

Learn offers a broad array of training solutions for both proactive and reactive risk management, for both employees and management, including tracking for completion and effectiveness.

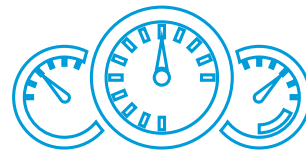
Learn Features



Valuable Content



Live Support



Admin Dashboard



Future Proof



Certificates & Reporting

219K
EMPLOYERS
USING THINKHR

1K
ACTIVE
PARTNERS

3.7M+
QUESTIONS ANSWERED
BY LIVE ADVISORS

1.1M+
LEARN COURSES
COMPLETED

INDUSTRY-LEADING HR CONTENT AND LEARNING SOLUTION

Staying compliant and minimizing risks requires constant vigilance across an entire workforce. ThinkHR's training content covers all compliance topics:

- ✔ Affordable Care Act—What You Need to Know
- ✔ HIPAA—Your Obligations Under the Privacy Rule
- ✔ Hazard Communications*
- ✔ Workers' Compensation
- ✔ FMLA—HR Readiness
- ✔ FLSA—What Supervisors Need to Know
- ✔ Strategies for Legally Avoiding Unions

Effective HR manages people risks across an entire organization. Sexual harassment is a critical risk management issue. Taking this risk head on requires ongoing training of supervisors and employees alike.

- ✔ Sexual Harassment—What Employees Need to Know
- ✔ Stop Sexual Harassment—California Supervisors*
- ✔ Title VII: Harassment and Discrimination Prevention
- ✔ Preventing Sexual Harassment—A Guide for Supervisors
- ✔ Social Media and Sexual Harassment
- ✔ Conducting Investigations Based on Unfair Treatment of Harassment Claims

Effective training programs ensure an organization gets the best out of their employees and enables them to retain key employees through professional development and improved morale.

- ✔ Project management
- ✔ Motivating and inspiring employees
- ✔ Implementing solutions to obstacles
- ✔ Effective meetings
- ✔ Developing employee skills and capacity
- ✔ Employee onboarding